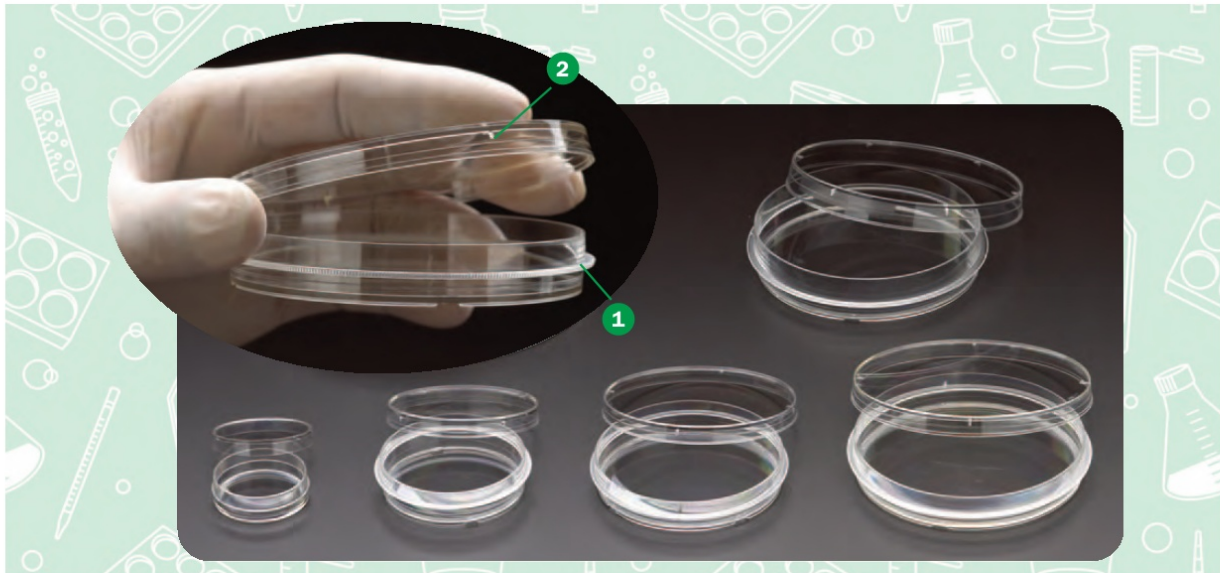


## Treated Cell Culture Dishes



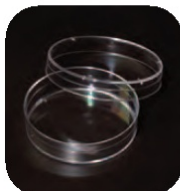
- Cell culture treatment process provides consistent and even hydrophilic surface for improved cell attachment
- Manufactured from medical grade virgin polystyrene

- 1 35, 60, 70 and 100mm dishes available with a gripping feature for improved handling
- 2 Vented lids contain molded spacers to allow gas exchange, and stacking rings for increased stability

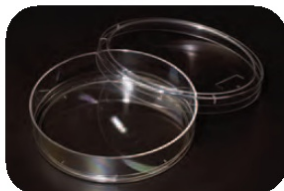
### DISHES - TREATED CELL CULTURE WITH GRIPPING FEATURE

S, R/D F, NP, USP, PS

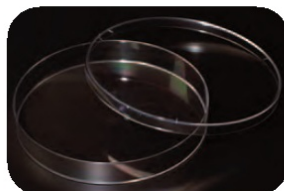
Part No.	Product Description	Working Volume	Growth Area	Pack Description	Qty/Case
229635	35mm x 10mm Tissue Culture Treated Dish	5mL	8.5cm <sup>2</sup>	10/Re-sealable Bag	500
229660	60mm x 15mm Tissue Culture Treated Dish	7 - 8mL	21cm <sup>2</sup>	10/Re-sealable Bag	500
229670	70mm x 15mm Tissue Culture Treated Dish	7 - 8mL	36.3cm <sup>2</sup>	10/Re-sealable Bag	500
229690	100mm x 15mm Tissue Culture Treated Dish	15 - 16mL	55cm <sup>2</sup>	10/Re-sealable Bag	500
229620	100mm x 20mm Tissue Culture Treated Dish	15 - 16mL	60.5cm <sup>2</sup>	10/Re-sealable Bag	300



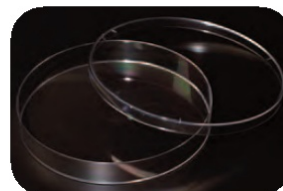
PN 229661



PN 229621



PN 229650 & 229651



PN 229652

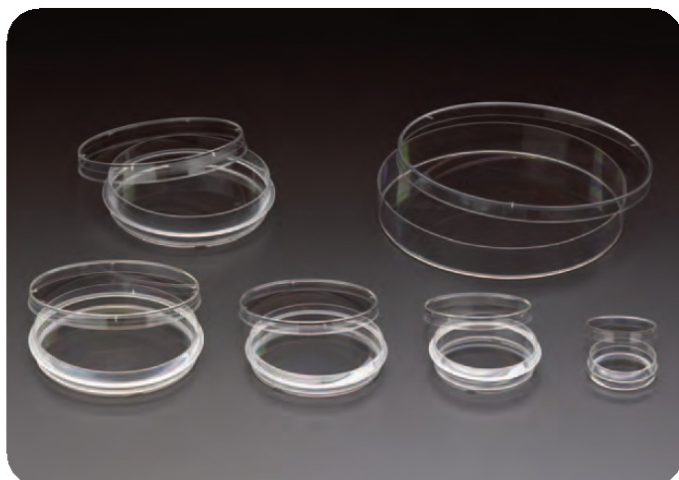
### DISHES - TREATED CELL CULTURE WITHOUT GRIPPING FEATURE

S, R/D F, NP, USP, PS

Part No.	Product Description	Working Volume	Growth Area	Pack Description	Qty/Case
229661	60mm x 15mm Tissue Culture Treated Dish	7 - 8mL	21cm <sup>2</sup>	20/Re-sealable Bag	500
229621	100mm x 20mm Tissue Culture Treated Dish	15 - 16mL	60.5cm <sup>2</sup>	10/Re-sealable Bag	300
229650	150mm x 20mm Tissue Culture Treated Dish	25 - 28mL	143cm <sup>2</sup>	1/Bag	60
229651	150mm x 20mm Tissue Culture Treated Dish	25 - 28mL	143cm <sup>2</sup>	5/Re-sealable Bag	100
<b>NEW</b> 229652	150mm x 25mm Tissue Culture Treated Dish	52 - 132mL	154cm <sup>2</sup>	5/Bag	60

877.345.4620 • [www.celltreat.com](http://www.celltreat.com) 23

## Non-Treated Cell Culture Dishes



- Non-Treated Cell Culture Dishes have thicker and more durable plastic than standard Petri Dishes - both can be used for the same applications
- 35, 60, 70 and 100mm dishes available with a gripping feature for improved handling
- Vented lids contain molded spacers to allow gas exchange, and stacking rings for increased stability
- 150mm x 20mm Dish available with Non-Vented Lid to reduce gas exchange
- Manufactured from medical grade virgin polystyrene

### DISHES - NON-TREATED CELL CULTURE WITH GRIPPING FEATURE

S, R/D F, NP, USP, PS

Part No.	Product Description	Working Volume	Growth Area	Pack Description	Qty/Case
229638	35mm x 10mm Petri Dish	5mL	8.5cm <sup>2</sup>	10/Bag	960
229663	60mm x 15mm Petri Dish	7 - 8mL	21cm <sup>2</sup>	10/Bag	500
229692	100mm x 15mm Petri Dish	15 - 16mL	55cm <sup>2</sup>	10/Bag	300
229693	100mm x 15mm Petri Dish	15 - 16mL	55cm <sup>2</sup>	10/Bag	500
229623	100mm x 20mm Petri Dish	15 - 16mL	60.5cm <sup>2</sup>	10/Bag	300

### DISHES - NON-TREATED CELL CULTURE WITHOUT GRIPPING FEATURE

S, R/D F, NP, USP, PS

229656	150mm x 15mm Petri Dish	25 - 28mL	153cm <sup>2</sup>	10/Bag	100
229653	150mm x 20mm Petri Dish	25 - 28mL	143cm <sup>2</sup>	5/Bag	100
229655	150mm x 20mm Dish, Non-Vented Lid	25 - 28mL	143cm <sup>2</sup>	5/Bag	100

## Loops, Needles and Spreaders

- Flexible for easy access to small volume tubes and dishes
- Color coded for easy identification
- Gentle on delicate agar or other surfaces
- L-Shaped Cell Spreader is ideal for evenly spreading bacterial cultures
- Loops and L-Shaped Cell Spreader available individually wrapped in peel-to-open paper/plastic wrappers



### L-SHAPED CELL SPREADERS

S, R/D F, NP, USP, PP

Part No.	Product Description	Color	Length	Pack Description	Qty/Case
229617	L-Shaped Spreader	Green	145mm	10/Pack	500
229616	L-Shaped Spreader	Green	145mm	100 Individually Wrapped/Bag	100

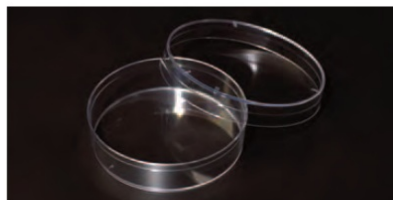
### INOCULATING LOOPS AND NEEDLES

S, R/D F, NP, USP, PP

229601	1uL Inoculating Loop	White	218mm	20/Pack	2000
229602	1uL Inoculating Loop	White	218mm	100 Individually Wrapped/Bag	600
229610	10uL Inoculating Loop	Blue	221mm	20/Pack	2000
229612	10uL Inoculating Loop	Blue	221mm	100 Individually Wrapped/Bag	600
229615	Inoculating Needle	Yellow	221mm	20/Pack	2000

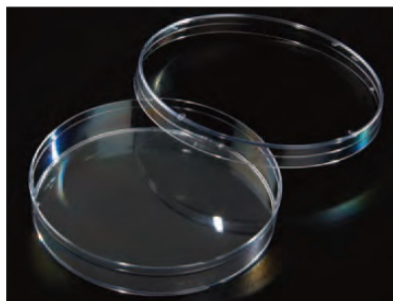


## Petri Dishes

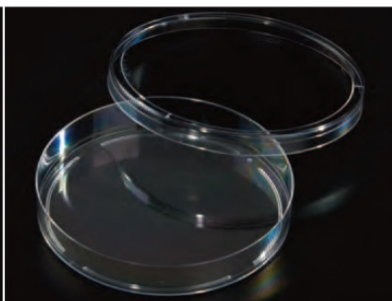


Part No. 229665

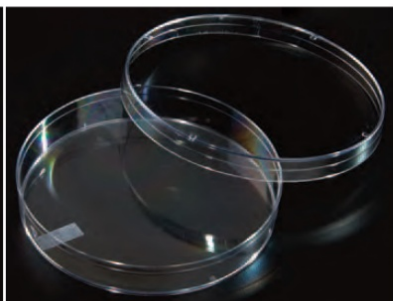
- CELLTREAT Petri Dishes are manufactured in high capacity automated production lines resulting in high quality, value priced products
- Ventilation ribs reduce condensation and allow air circulation
- Consistent flatness allows for even media distribution
- **CELLTREAT ADVANTAGE FEATURE:**
- Durable packaging offers greater protection from damage versus competitive brands



Part No. 229695



Part No. 229694



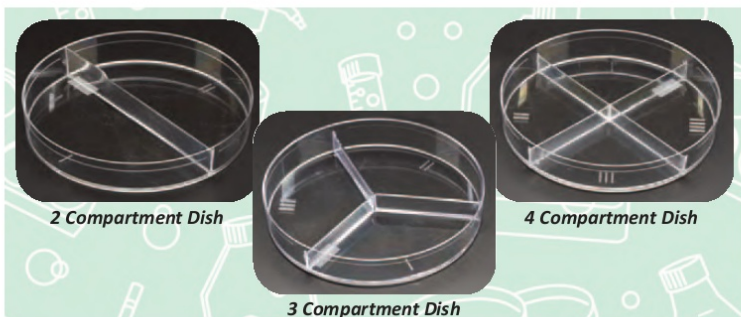
Part No. 229697

STACKABLE	STACKABLE/SLIDEABLE	SLIPPABLE
Lids contain stacking rings for increased stability	Features partial edge ring on base which allows a single dish to be slid from a large stack and enhances stability when stacked	Designed for automated filling and streaking systems, features side arrows and ISO Mark Target for automation

DISHES - PETRI							S, R/D F, NP, USP, PS
Part No.	Product Description	Dish Style	Working Volume	Growth Area	Pack Description	Qty/Case	
229665	60mm x 15mm Petri Dish	Stackable	7 - 8 mL	21cm <sup>2</sup>	20/Bag	500	
229694	100mm x 15mm Petri Dish	Stackable/Slideable	15 - 16mL	55cm <sup>2</sup>	20/Bag	500	
229695	100mm x 15mm Petri Dish	Stackable	15 - 16mL	55cm <sup>2</sup>	20/Bag	500	
229697	100mm x 15mm Petri Dish	Slippable	15 - 16mL	55cm <sup>2</sup>	20/Bag	500	

## Compartment Petri Dishes

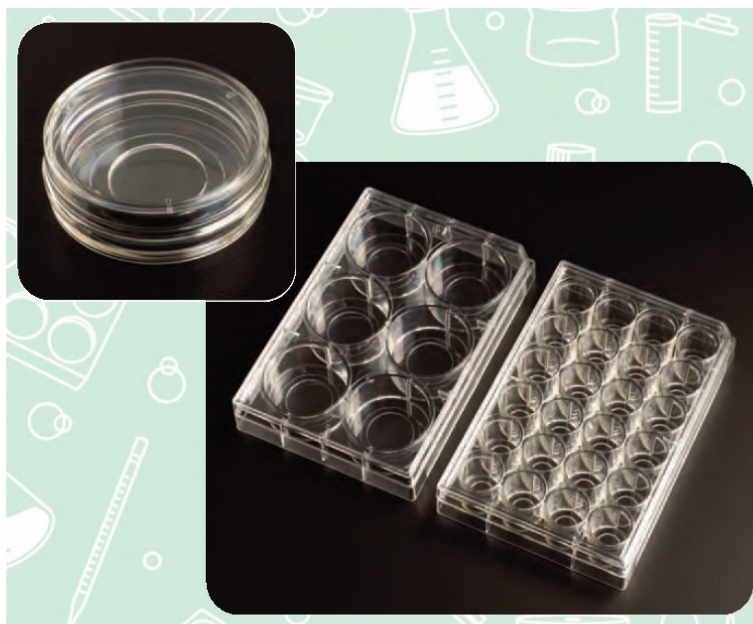
- Designed for simultaneous studies of organisms in a common environment
- Molded dividers create completely separate compartments while allowing airflow
- Ridge on bottom of dish allows easy handling and stacking
- Lids contain 3 molded spacers to allow gas exchange
- Working volume and growth area listed in table below are per compartment



DISHES - COMPARTMENT PETRI							S, R/D F, NP, USP, PS
Part No.	Product Description	Working Volume	Growth Area	Pack Description	Qty/Case	Stackable (Y/N)	
229682	100mm x 15mm Petri Dish, 2 Compartments	7-8mL	28.3cm <sup>2</sup>	20/Bag	500	Y	
229683	100mm x 15mm Petri Dish, 3 Compartments	5mL	18.9cm <sup>2</sup>	20/Bag	500	Y	
229684	100mm x 15mm Petri Dish, 4 Compartments	4mL	14.1cm <sup>2</sup>	20/Bag	500	Y	

877.345.4620 • [www.celltreat.com](http://www.celltreat.com) 25

## Glass Bottom Cell Culture Dishes & Plates



- Glass bottom dishes and plates have the same great features as standard tissue culture treated products with the added benefit of borosilicate glass bottom microwells
- Convenient live cell viewing without needing to transfer
- Optically clear borosilicate glass for exceptional viewing
- Applications include: cell culture and imaging, live cell observation and specialty microscopy such as confocal high resolution and contrast
- Traditional footprints cause minimal disruption in cell culture techniques
- Constructed with noncytotoxic medical adhesive
- Round cover glass also available for use with glass bottom plates and dishes (see below)

### DISHES - GLASS BOTTOM TISSUE CULTURE TREATED S, R/D F, NP, USP, PS, GLS

Part No.	Product Description	Pack Description	Qty/Case
229632	30mm x 10mm Tissue Culture Treated Dish, 15mm Glass Bottom	10/Re-sealable Bag	50

### PLATES - GLASS BOTTOM TISSUE CULTURE TREATED S, R/D F, NP, USP, PS, GLS

229107	6 Well Tissue Culture Plate with Lid, 20mm Glass Bottom	Individual	5
229125	24 Well Tissue Culture Plate with Lid, 10mm Glass Bottom	Individual	5

## Round Cover Glass

- High-quality, optically clear borosilicate glass cover slips are ideal for specialty microscopy and imaging
- Ideal for use with Dishes and Multiple Well Plates and anywhere a square cover glass is unsuitable
- Consistent flatness and scratch-free
- Resistant to organic solvents
- Packaged in a hinged plastic storage case
- 15mm Round Cover Glass can be used with a 24 Well Glass Bottom Plate (Part No. 229125)
- 20mm Round Cover Glass can be used with a 12 Well Plate or 30mm Glass Bottom Dish (Part No. 229632)
- 25mm Round Cover Glass can be used with a 6 Well Glass Bottom Plate (Part No. 229107)
- Cover Glass is #1.5 thickness



### ROUND COVER GLASS S, R/D F, NP, A, GLS

Part No.	Product Description	Qty/Case
229172	15mm Round Cover Glass, Fits 24 Well Plate	100/Pack
229173	20mm Round Cover Glass, Fits 12 Well Plate or 30mm Dish	100/Pack
229174	25mm Round Cover Glass, Fits 6 Well Plate	100/Pack