

Eliminating sensor errors in loop calibrations

Application Note

Calibrating a loop is more than just 4 mA to 20 mA

Significant performance improvement can be realized by optimizing the loop calibration measurement system to better accommodate the unique characteristics of the temperature sensing element. All temperature probes and their sensing elements are unique, with variations in materials, construction and usage, or exposure to different environments. This uniqueness continues throughout the useful life of the sensor, in the form of drift due to mechanical shock and vibration or to contamination of the materials when exposed to the material they are measuring. Only through periodic verification can these differences and changes be accommodated, improving total measurement performance.

Temperature plays an important role in many industrial and commercial processes. Examples range from sterilization in pharmaceutical companies, metal heat-treatment to ensure optimal strength in aerospace applications, temperature verification in a cold storage warehouse, and atmospheric and oceanographic research. In all temperature measurement applications, the sensor strongly affects the results; unfortunately, many measurements are made without optimizing the system to get the best performance from the temperature transducer.

The majority of process temperature measurements are performed using a sensing element connected to a transmitter.

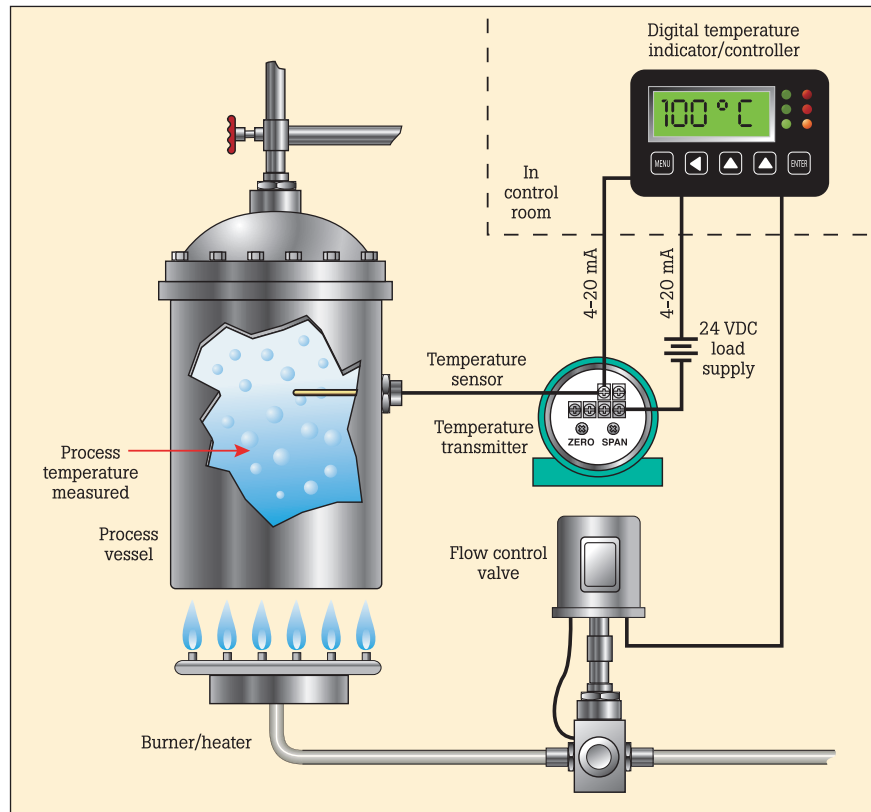


Figure 1. Diagram of a typical process temperature measurement system.

Figure 1 shows a diagram of a common configuration.

In many applications, it is common to verify the elements of the measurement system separately, but in doing so, significant improvements made possible by considering the system as a whole are ignored. One of the main reasons the elements are verified or calibrated separately is that it is often considered to be more efficient. Verifying the measurement component is done simply and quickly with an electronic thermocouple (TC) or

resistance temperature detector (RTD) simulator. This approach does not verify the performance of the associated temperature probe, and assumes all probes are identical and closely follow some standard. In practice, no two probes are identical; they all vary from the ideal standard, and over time and usage their characteristics change. Understanding how probes vary from the ideal will allow you to optimize the measurement system to achieve the best performance.

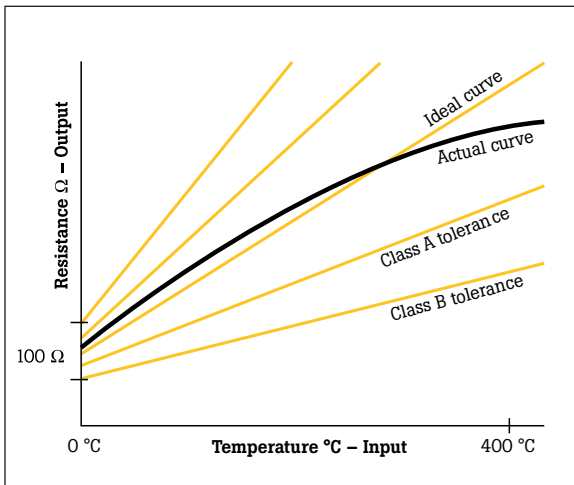


Figure 2.

System accuracy comparison measuring 150 °C using a Pt100 (IEC751) RTD with a transmitter span of 0 to 200 °C			
Standard RTD	Accuracy	Characterized RTD	Accuracy
Rosemount Model 644H	± 0.15 °C	Rosemount Model 644H	± 0.15 °C
Standard RTD	± 1.05 °C	Matched (calibrated) RTD	± 0.18 °C
Total system	± 1.06 °C	Total system	± 0.23 °C

Total system accuracy calculated using RSS statistical method.

Table 1

Rosemount Inc. uses the example provided in Table 1 for information on the possible performance improvement of their Model 644H Smart Temperature Transmitter. To achieve this performance improvement, the Rosemount 644H is given information (Callendar Van Dusen Coefficients) that allows it to correct for the unique performance of the temperature sensing element, in this case a standard IEC751 Pt100 sensor.

Dry-wells and micro-baths are good choices for verifying the performance of temperature probes and other related sensors. But they do not have the capability to calibrate the transmitter's output or readout and, by themselves, do not allow the entire measurement loop to be optimized. A heat source, combined with an intelligent electronic process calibrator that is capable of calibrating the transmitter and readout, is required if the above performance improvement is to be realized and maintained.

By combining the automating and documenting capabilities of the Fluke 754 Documenting Process Calibrator with Fluke Calibration's intelligent and stable family of field dry-wells and micro-baths, you have the capability to test the entire loop. This combination of equipment allows you to easily verify the characteristics of the temperature sensor and measurement electronics. Using this information, the entire loop can be adjusted to optimize system measurement performance. Below are some examples of how to optimize the performance of your measurement system using these instruments.

The Fluke 754 is connected to a Fluke Calibration dry-well or micro-bath by way of a serial RS-232 interface cable. Version 2.3 or greater firmware for the 754 is required. The firmware version is displayed briefly on the display of the 754 during power-up. If you do not have the required firmware, contact your authorized Fluke distributor for information regarding an upgrade. The serial cable may be obtained from either your authorized Fluke distributor or directly from your Fluke Calibration representative. The heat source is connected to the 754 pressure port and is accessed by the 754 TC/RTD source key. Due to the length of these tests, it is recommended that a fully charged battery or battery eliminator for the 754 be used. A diagram of the connection of this equipment is pictured in Figure 4.

In many process applications, the instrumentation of choice for temperature measurements

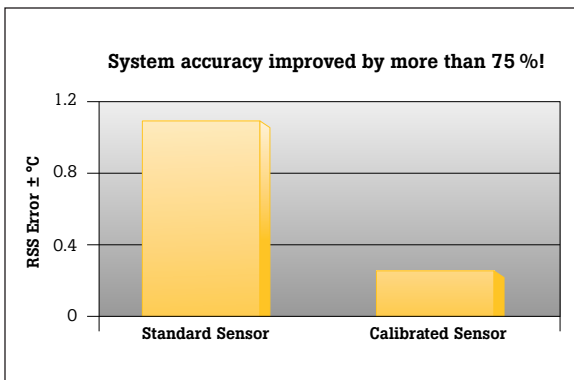


Figure 3. System accuracy improvement achieved with a calibrated Pt100 Sensor.

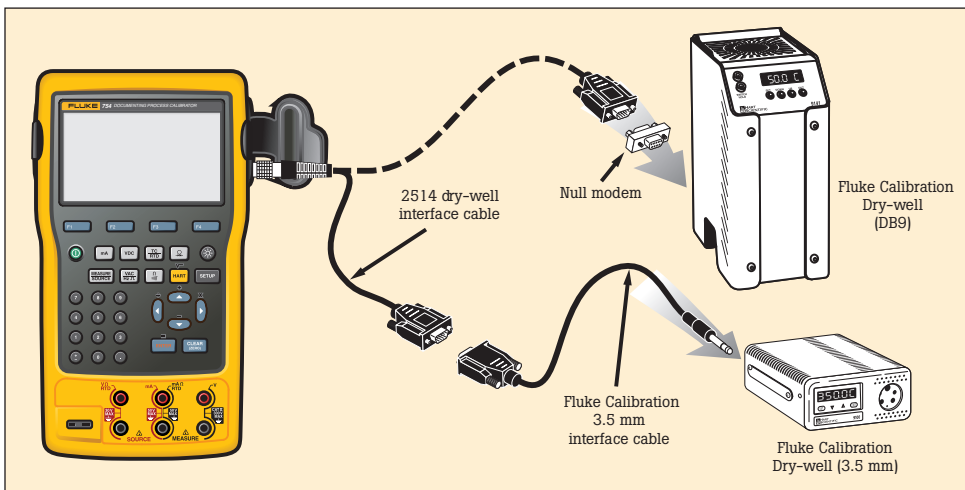


Figure 4. Connecting a Fluke 754 to a Fluke Calibration dry-well.

is a transmitter that accepts the output from the temperature sensor and drives a 4-20 mA signal back to the PLC, DCS or indicator. This example describes one method for verifying performance and offers to optimize this measurement to improve performance.

To perform this test, the RTD sensor is removed from the process and inserted in to the dry-block calibrator. The mA connections from the transmitter are connected directly to the 754 Documenting Process Calibrator (see Figure 5). In most applications, this solution provides adequate performance. But if your application includes a uniquely-shaped sensor, you might want to consider the use of a micro-bath. If increased heat source accuracy is needed, the use of a reference thermometer combined with the 754's User-Entered Values feature can be used. See application note 1263925 for more information on 754 User-Entered Values.

Once connections are made, you are ready to acquire transmitter configuration (if you have a transmitter with HART communications), set the test parameters, and configure the calibrator for mA measurement and dry-well control as the sourcing parameter.

Pressing the HART key on the 754 allows the calibrator to acquire the transmitter configuration from a transmitter with HART communication capability. Following is a sample of this acquired configuration information.

UNIT	MEASURE	LOOP	UNIT
	Measure: 7.750 mA		
	Source: OFF		
G44 Temp: TT100			
	PV: 23.7 °C		
	PVAD: 7.7575 mA		
	PV LRV: 0.0 °C		
	PV URV: 100.0 °C		
Select operation for this device:			
Abort	Service	Setup	Process

Pressing the HART key on the 754 again presents the following screen with several options for configuring the calibrator to the correct parameters for this test. For the purposes of this example, we'll use the transmitter configured to output a 4-20mA signal; therefore the correct configuration of the 754 is to measure mA and source temperature via the dry-well.

UNIT	MEASURE	LOOP	UNIT
TT100	Measure: 7.750 mA		
	Source: OFF		
Select calibrator mode of operation:			
Don't change calibrator mode			
HEAD mA, SOURCE TT100, a=385/mV			
HEAD PV, SOURCE TT100, a=385/mV			
HEAD mA, SOURCE Drywell			
HEAD PV, SOURCE Drywell			
Abort			

Pressing the AS FOUND soft key on the 754 provides access to parameters needed to configure an automated test. Below is a typical definition that will test the measurement system from 50°C to 150°C sourcing temperatures using a dry-well

MEASURE	UNIT	MEASURE	LOOP	UNIT
0% Value	4.000 mA			
100% Value	20.000 mA			
Tolerance	0.25 %			
Delay	10 s			
Hart 9143				
0% Value	50.0 °C			
100% Value	150.0 °C			
Test Strategy	3			
Abort	User Value	Custom Units	Done	

in ascending order.

After the test has been defined, the Fluke 754 will take over and run the test recording the sourced temperature, measured output of the transmitter, in mA. At the end of the test, the results will be displayed on the screen, allowing the test technician to evaluate the results and take corrective action if needed. Following is



Figure 5. Fluke 754 and Fluke Calibration dry-well calibrating a 4-20 mA transmitter and temperature sensor.

SOURCE	MEASURE	LOOP	UNIT
50.0 °C	4.000 mA		0.03
75.0 °C	7.500 mA		0.02
100.0 °C	12.125 mA		0.01
124.0 °C	16.035 mA		0.02
149.0 °C	20.225 mA		0.01
Abort	Prev. Page	Next Page	Done

an example of the results.

One method of optimizing this system to minimize error is to shift the URV or LRV of the transmitter to the values measured by the 754. With a transmitter with HART capabilities, this is easily done via the 754, by simply entering new values in the HART SETUP

UNIT	MEASURE	LOOP	UNIT
	Measure: 20.462 mA		
Enter Values			
	PV Unit: °C		
	Lower Range Value: 50.0		
	Upper Range Value: 150.0		
Abort		Send	

screen below. With an analog transmitter, you will need to mechanically adjust the Zero and Span adjustments when sourcing the appropriate temperature values. The 754 has a convenient menu key that allows you to easily set the correct value on the dry-well with a single button press.

Calibrating and adjusting measurement systems using characterized sensors and calibration constants

Another method of reducing uncertainty and optimizing temperature measurement systems is to carefully characterize the temperature sensor, calculate correction coefficients and load these correction coefficients into the measurement equipment. This is the method used in the Rosemount 644H example on the previous page. This method does a better job of reducing the error in the measurement system that comes from the sensor. But it requires transmitters that have a correction or linearization algorithm that can accommodate the sensor. For example, Platinum RTDs typically use the Callendar-Van Dusen (CVD) equation for linearizing the sensor's output. A characterized sensor will provide unique CVD coefficients that can be input into the transmitter, allowing its conversion algorithm to more closely match the unique characteristics of the sensor.

The Fluke 754 connected with a dry-well can help to collect the necessary information to characterize the sensor, but additional software and resources will be needed to take this data and generate new CVD constants. Examples of the required software include Fluke Calibration's TableWare. Other software that could be used include Mathcad, Mathematica, Maple or Excel. But these packages require considerable knowledge of the equations used to linearize

a sensor and the ability to perform curve-fitting of the collected data.

The method of characterizing a probe is similar to the procedure above, but rather than measuring the output of the transmitter, the output of the sensor is connected directly to the 754. An example of data collected by a 754 on a temperature sensor is shown below.

Data like this can be entered

SOURCE	MEASURE	DIFFERENCE
-25.0°C	91.1 0	0.00%
0.0°C	101.3 0	0.00%
25.0°C	116.8 0	0.00%
50.0°C	128.6 0	0.00%
75.0°C	139.2 0	0.00%

into Fluke Calibration's software using the screens in Figure 6 and then unique CVD constants calculated for that probe.

These coefficients can then be entered into a suitable measurement device that allows its linearizations to match the characteristics of the probe.

Summary

Using a dry-well in combination with a process calibrator allows measurement systems to be verified and adjusted to optimize measurement performance. By verifying the entire measurement system, unique characteristics of the sensing element can be combined with the measurement electronics

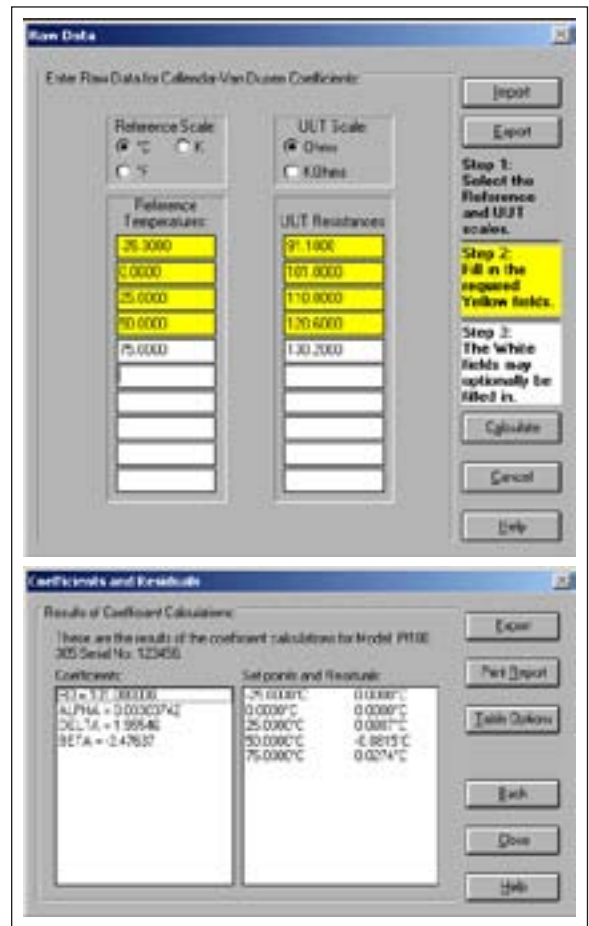


Figure 6. TableWare software from Fluke Calibration calculates unique CVD constants that match the characteristics of the probe.

to minimize measurement error. This can result in a significant reduction in measurement errors. The Fluke 754 Documenting Process Calibrator, combined with a Fluke Calibration dry-well makes this process faster and easier.

Fluke Calibration. Precision, performance, confidence.™

Electrical	RF	Temperature	Pressure	Flow	Software
------------	----	-------------	----------	------	----------

Fluke Calibration
PO Box 9090,
Everett, WA 98206 U.S.A.

Fluke Europe B.V.
PO Box 1186, 5602 BD
Eindhoven, The Netherlands

For more information call:
In the U.S.A. (877) 355-3225 or Fax (425) 446-5116
In Europe/M-East/Africa +31 (0) 40 2675 200 or Fax +31 (0) 40 2675 222
In Canada (800)-36-FLUKE or Fax (905) 890-6866
From other countries +1 (425) 446-5500 or Fax +1 (425) 446-5116
Web access: <http://www.flukecal.com>

©2004-2011 Fluke Corporation. Specifications subject to change without notice.
Printed in U.S.A. 11/2011 2148146C A-EN-N

Modification of this document is not permitted without written permission from Fluke Corporation.