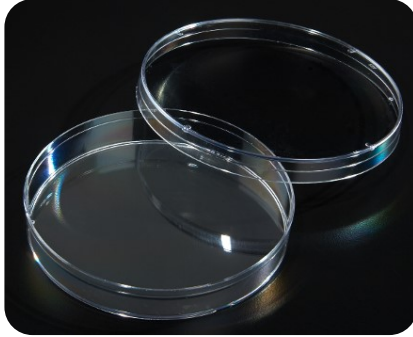


# Petri Dish Selection Guide

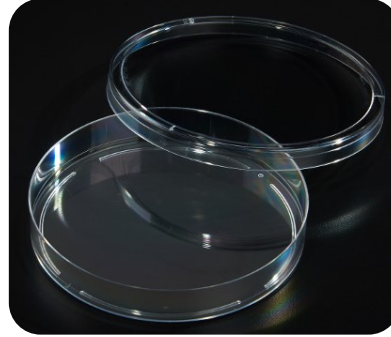


Manufactured in high capacity automated production lines  
resulting in high quality, value priced products!

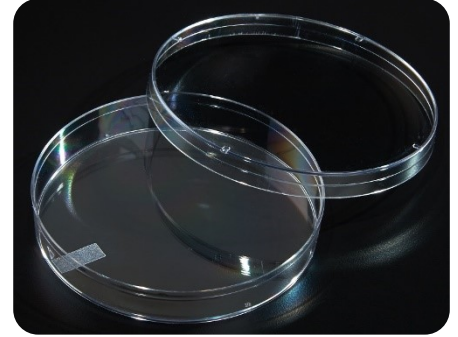
## 100mm x 15mm Petri Dish Options



Part No. 229695



Part No. 229694



Part No. 229697

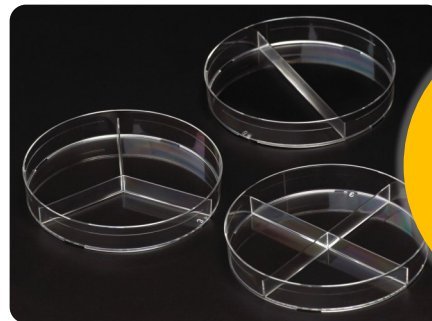
STACKABLE	STACKABLE/SLIDEABLE	SLIPPABLE
Lids contain stacking rings for increased stability	Features partial edge ring on base which allows a single dish to be slid from a large stack and enhances stability when stacked	Designed for automated filling and streaking systems, features side arrows and ISO Mark Target for automation

## 60mm x 15mm Petri Dish



Part No. 229665

## Compartment Petri Dishes



Part No. 229682, 229683 & 229384

Molded dividers create completely separate compartments while allowing airflow

Part No.	Product Description	Working Volume	Growth Area	Pack Description	Qty/Case	Dish Style
229665	60mm x 15mm Petri Dish, Stackable	7-8mL	21cm <sup>2</sup>	20/Bag	500	Stackable
229694	100mm x 15mm Petri Dish, Slideable	15-16mL	55cm <sup>2</sup>	20/Bag	500	Stackable/Slideable
229695	100mm x 15mm Petri Dish, Stackable	15-16mL	55cm <sup>2</sup>	20/Bag	500	Stackable
229697	100mm x 15mm Petri Dish, Slippable	15-16mL	55cm <sup>2</sup>	20/Bag	500	Slippable
229682	100mm x 15mm Petri Dish, 2 Compartments	7-8mL	28.3cm <sup>2</sup>	20/Bag	500	Compartment
229683	100mm x 15mm Petri Dish, 3 Compartments	5mL	18.9cm <sup>2</sup>	20/Bag	500	Compartment
229684	100mm x 15mm Petri Dish, 4 Compartments	4mL	14.1cm <sup>2</sup>	20/Bag	500	Compartment

